

ZEPPELIN[®]
WE CREATE SOLUTIONS

**POWERFUL PRODUCTS –
SUPERIOR PERFORMANCE**
Maximum operating efficiency included



Diverter valves and Rotary feeders

www.zeppelin.com

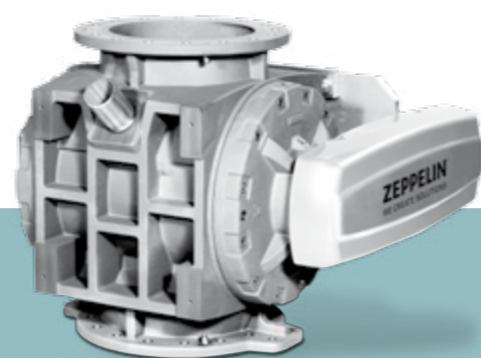
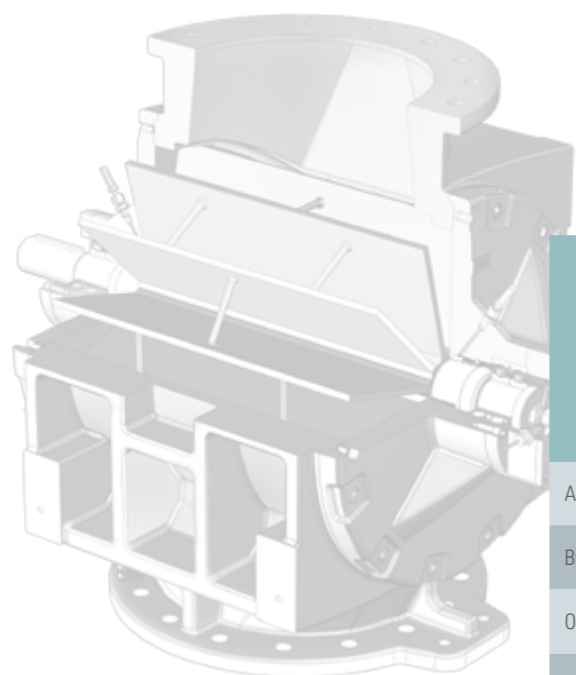


ROTARY FEEDERS FROM THE EXPERT

The Zeppelin modular system of rotary feeders always offers the ideal solution for your application.

High pressure rotary feeders

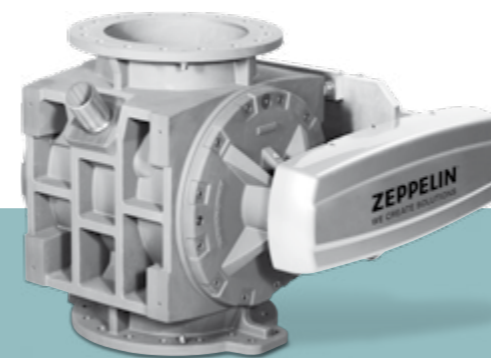
Medium pressure rotary feeders



CFH

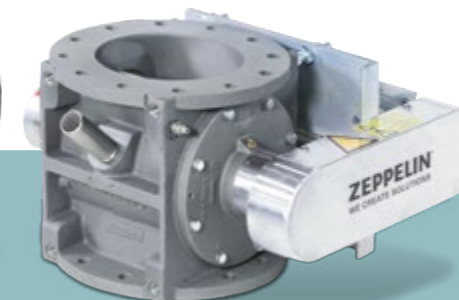
Application	For feeding into pneumatic dilute and dense phase conveying systems or for feeding and discharge of bulk materials in processing plants
Bulk materials	Powder, pellets
Operating pressure	-1.0 to +3.5 bar (g)
Temperature range	-10 to +250°C
Sizes (Capacities)	200 to 850 5 to 350 LTR
Materials	Aluminium/stainless steel/gray cast iron
Accessories	Direct drive/chain drive, leakage gas collector, feeding chutes, ATEX design, quick cleaning version, additional accessories upon request

Subject to modifications without notice



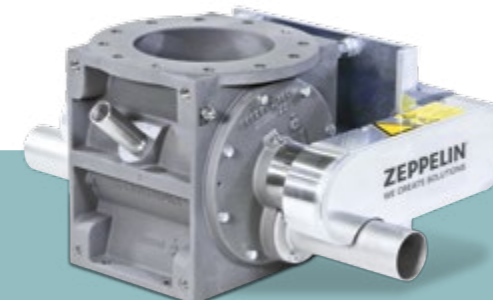
CFM

For the metered discharge of bulk materials as well as feeding equipment for dilute phase conveying systems



A series II

For the metered discharge of bulk materials as well as feeding equipment for dilute phase conveying systems



D series II

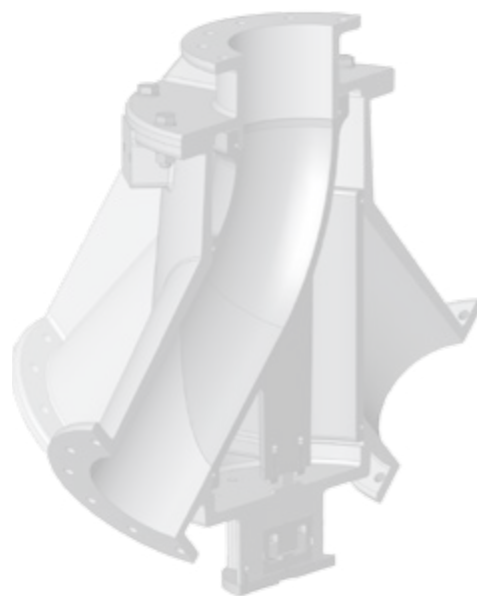
For feeding bulk materials into pneumatic dilute phase conveying systems

Powder



SETTING THE COURSE FOR THE FUTURE

Zeppelin diverter valves have been developed to guarantee reliable operation in the future as well. The patented design of the inlet, the outlet and the rotary plug channel ensures gentle transport of materials without any deposits. The active conveying direction is pressure-tight to avoid leakage or product impurities. Inflatable seals enable washing of pipes.



Diverter valves

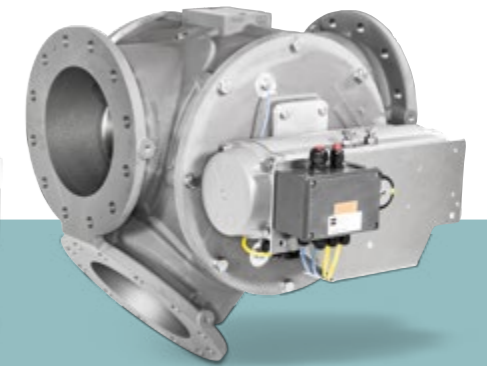


M-Diverter valve



Single channel

TST-Diverter valve



VST-Diverter valve

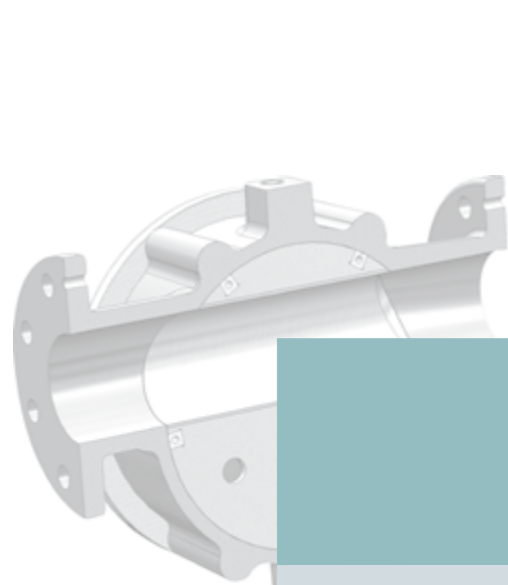
Application	Diverter valves for directing or converging the product flow in pneumatic conveying systems and gravity pipes		
Special features	Multi-way diverter valve	Mounted on the silo without adapters	Universal use for directing the product flow
Bulk materials	Powder, pellets		
Operating pressure	-1.0 to +3.5 bar (g)		
Temperature range	-40 to +120°C		
Diverting angle	4 x 90°	90°	45°
Sizes (diameters)	150 to 350	80 to 350	80 to 300
Materials	Aluminium/parts in contact with the product made of stainless steel		
Accessories	ATEX design, inflatable seal, additional accessories upon request		

Subject to modifications without notice



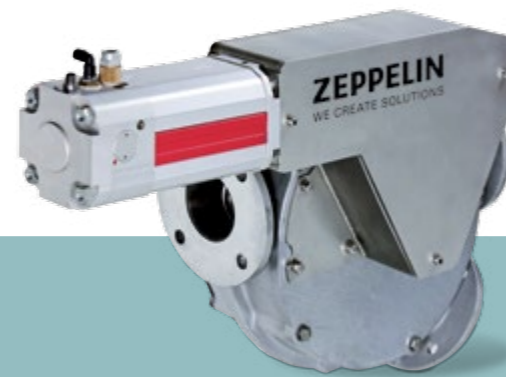
Diverter valves

Hose-type diverter valves



ZWR-Diverter valve

Two-channel



ZWV-Diverter valve

Two-way

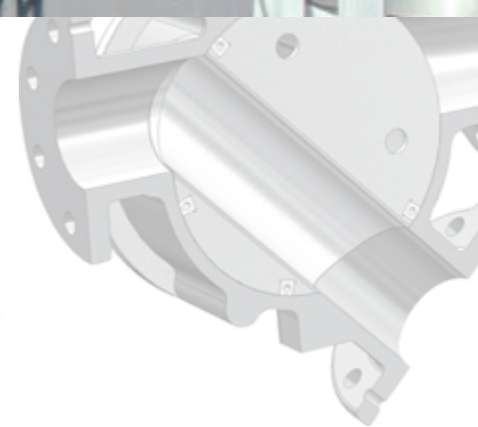


ZWS-Diverter valve

Three-way



DWS-Diverter valve



Application	For directing or converging the product flow in pneumatic conveying systems and gravity pipes		
Special features	Abrasive products, exchangeable wear inserts	Dilute phase conveying especially with powder	Adhesive powders with poor flowability
Bulk materials	Powder, pellets		
Operating pressure	-1,0 bis +3,5 bar (g)	-1,0 bis +2,0 bar (g)	-1,0 bis +4,0 bar (g)
Temperature range	-40 to +120°C		
Diverting angle	35°		
Sizes (diameters)	50 to 250	50 to 150	
Materials	Aluminium/parts in contact with the product made of stainless steel		Aluminium/parts in contact with the product made of stainless steel/PU
Accessories	ATEX design, additional accessories upon request		

Subject to modifications without notice



Global presence

- Australia
- Belgium
- Brazil
- China
- France
- Germany
- India
- Italy
- Korea
- Russia
- Saudi Arabia
- Singapore
- United Kingdom
- USA

Presented by:

Zeppelin Systems GmbH
Graf-Zeppelin-Platz 1
88045 Friedrichshafen
Germany

Tel.: +49 7541 202-02
Fax: +49 7541 202-491

zentral.fn@zeppelin.com
www.zeppelin.com

For the complete Zeppelin Systems range please visit our website at
www.zeppelin-systems.com